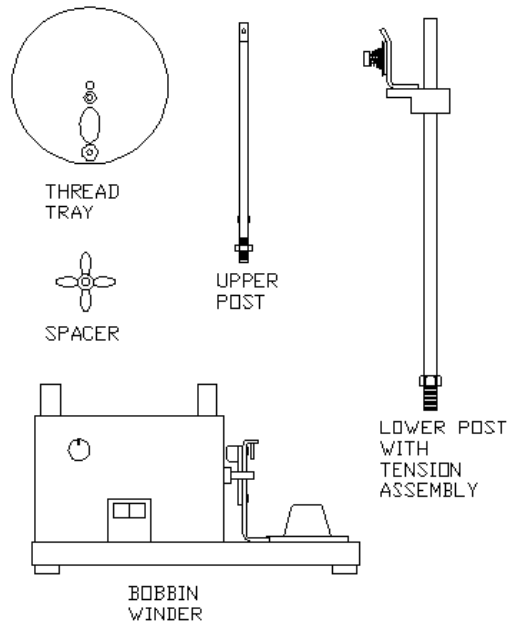
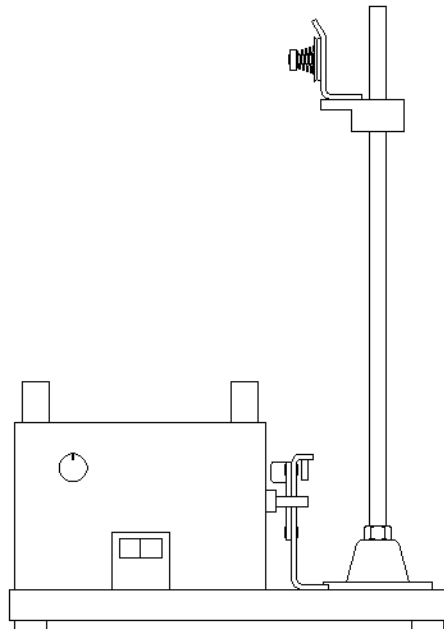


1.0 Bobbin winder assembly

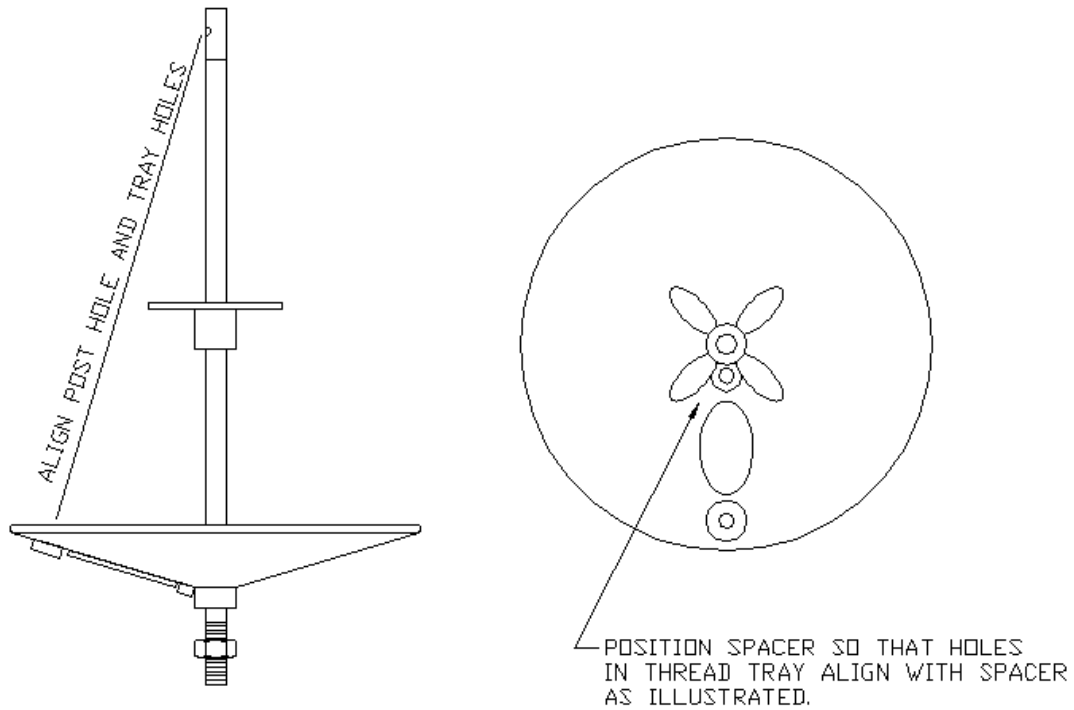
1. Remove the bobbin winder from packaging and confirm that all components are present.



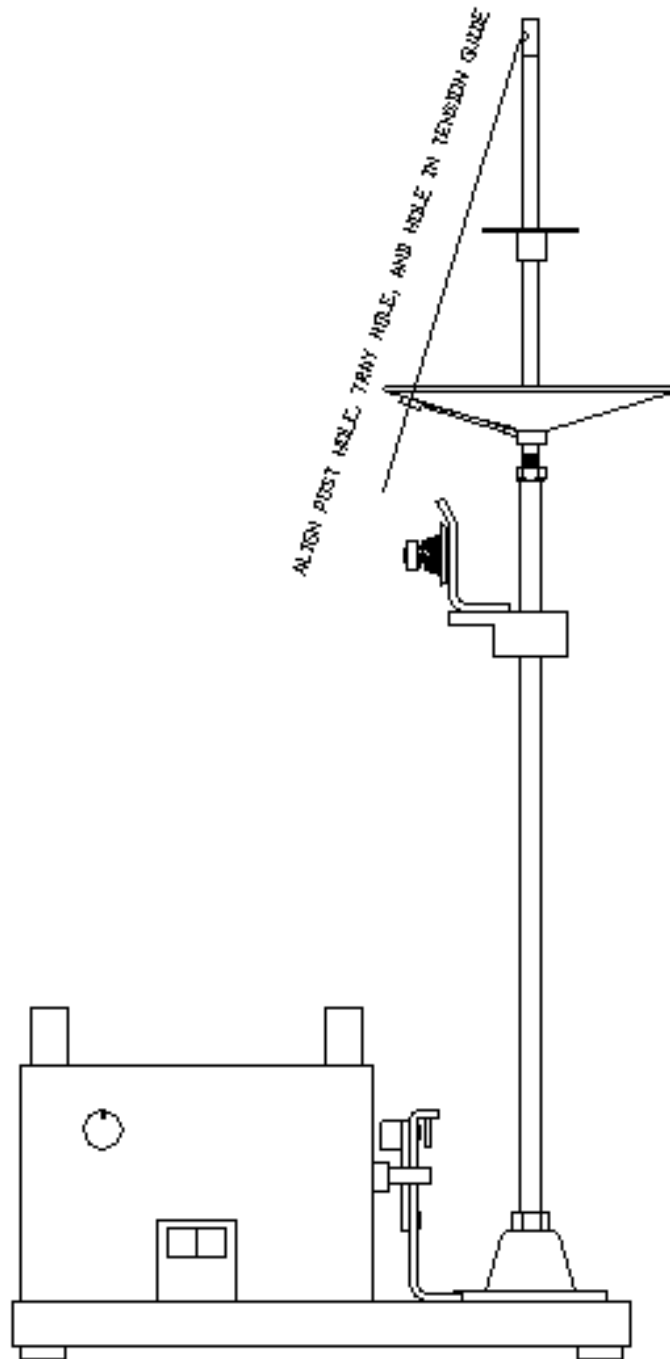
2. Screw lower post with tension assembly into silver base plate. Position tension assembly as illustrated and tighten hex nut against base.



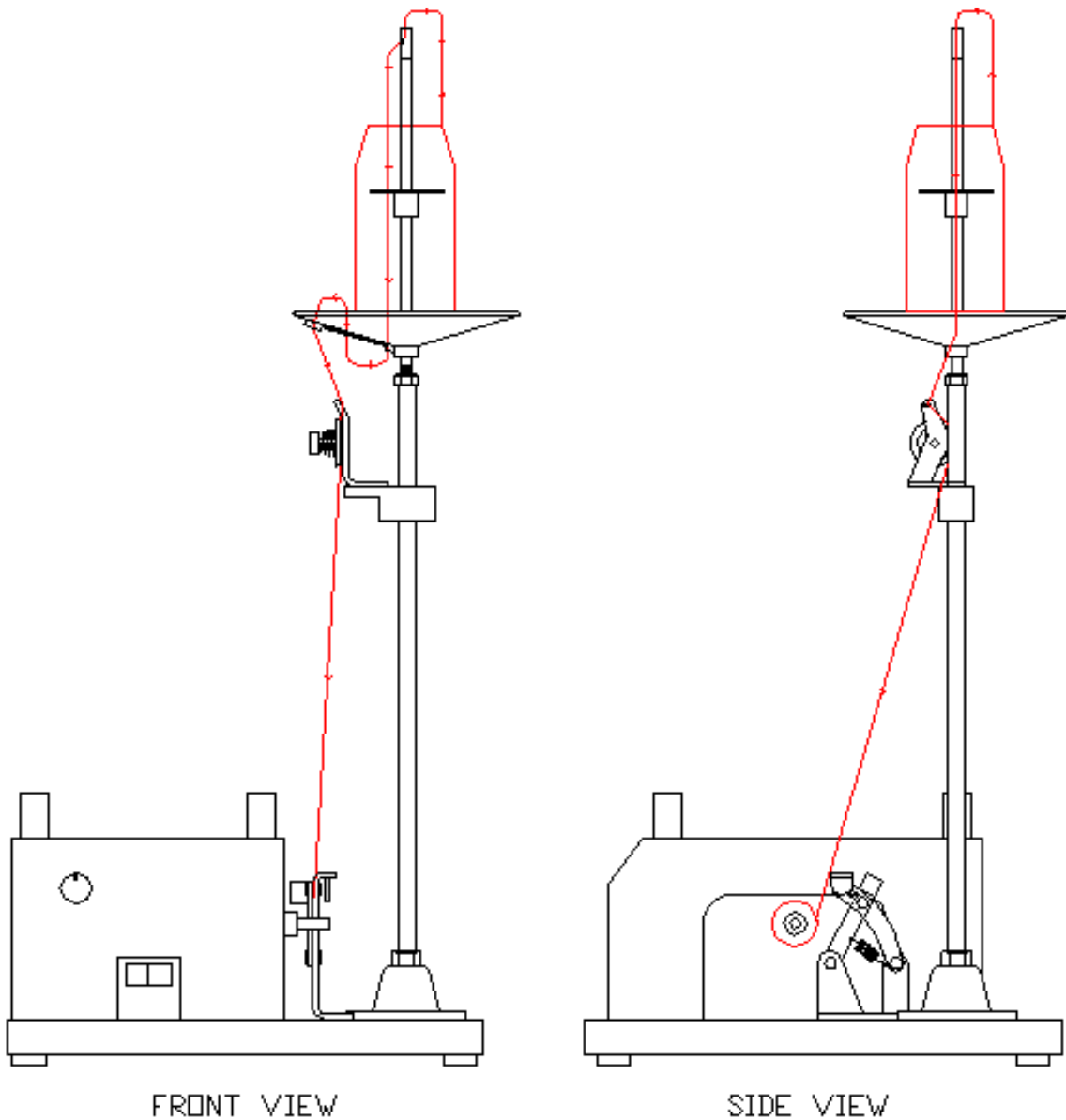
3. Install thread tray and spacer onto upper post. Align the spacer with the thread tray as illustrated. Additionally, align the hole in the guide at the top of the post with the holes in the thread tray.



4. Screw upper post with tray and spacer into the top of the lower post. Align the post hole, tray holes and tension guide hole and tighten the hex nut of the upper post against the lower post.



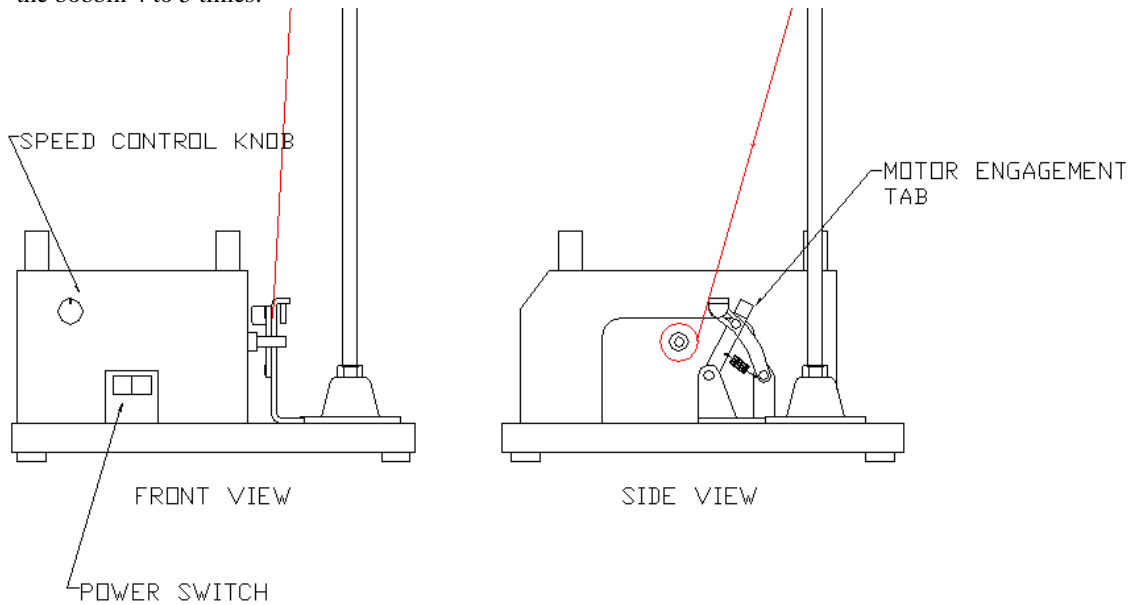
2.0 Threading the bobbin winder



1. Pull slack from cone and pass through the center of the cone from top to bottom.
2. Pass thread from the bottom side of the cone through the hole in the top of the top post and out through the hole in the side of the top post.
3. Pass thread through the pink eyelet in the thread tray.
4. Bring thread up from the bottom of the tray through the oval hole.
5. Pass the thread from the top of the tray down through the white eyelet in the tray.
6. Pass the thread through the eyelet in the tension assembly and run the thread clockwise (when viewed from the side) around the tension disc and down to the bobbin. **NOTE: DO NOT WRAP THE THREAD COMPLETELY AROUND THE TENSION ASSEMBLY. THE THREAD SHOULD ONLY PASS THROUGH THE RIGHT SIDE OF THE ASSEMBLY WHEN LOOKING AT THE BOBBIN WINDER FROM THE SIDE VIEW.**

3.0 Operating the bobbin winder

1. Thread the winder as discussed in section 2.0
2. Install a bobbin case onto the motor shaft of the bobbin winder.
3. If equipped, pass thread through the hole in the side of the bobbin shell. Otherwise wrap the thread around the bobbin 4 to 5 times.



4. Depress motor engagement tab towards bobbin installed on motor shaft.
5. Turn the power switch to ON
6. Adjust the speed control knob for desired speed. **NOTE: IF SPEED IS SET TOO LOW WITH CONTROL KNOB, BOBBIN WINDER MOTOR MAY NOT START. INCREASE SPEED IF NECESSARY.**
7. Bobbin winder motor turns OFF when motor engagement tab is reset by the thread on the bobbin.