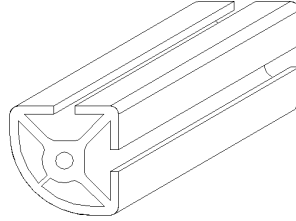


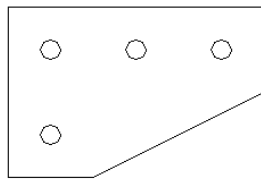
ABM International, Inc.
Cross Hatch Ruler Bar

1.0: Parts List

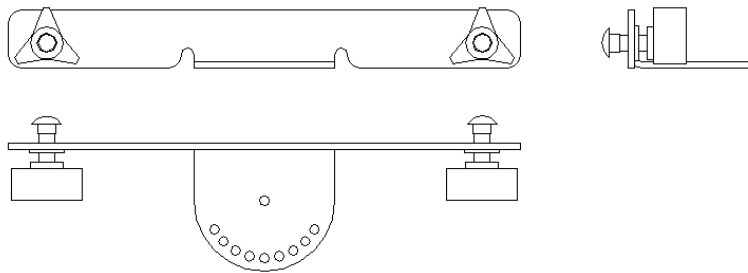
Ruler bar (Qty. 1)



Ruler bar bracket (Qty. 2)



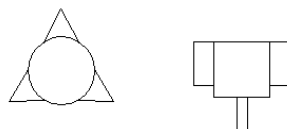
Ruler bracket (Qty. 1)



Ruler (Qty. 1)



Angle adjusting knobs (Qty. 2)



Bolt kit –

Hex head cap screw:



(Qty. 4) 5/16 x 3/4

Flat washers:



(Qty. 4) 5/16

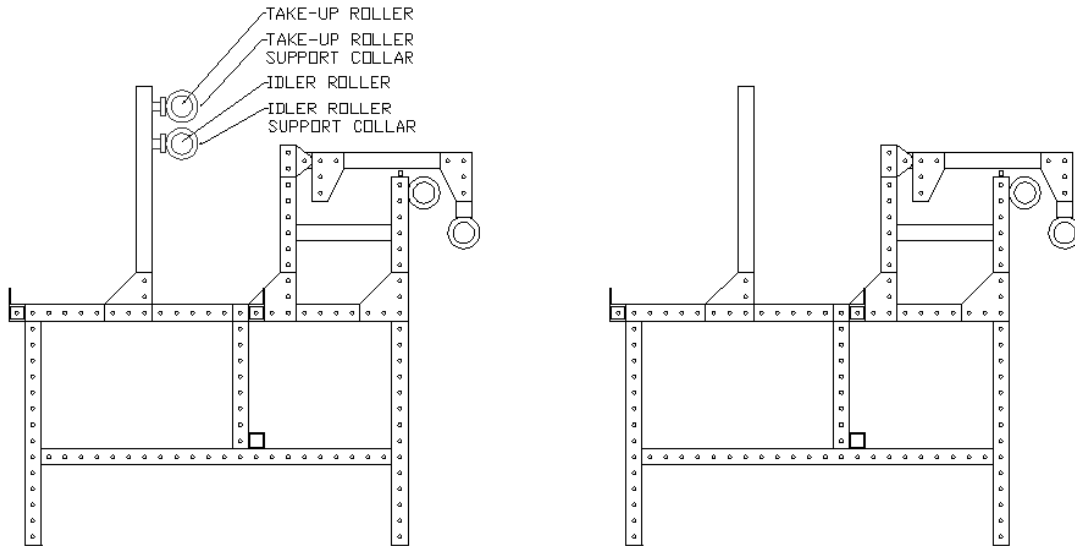
Lock washers:



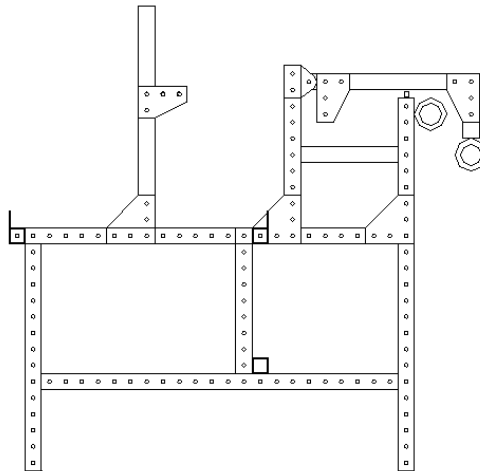
(Qty. 4) 5/16

2.0 Cross hatch ruler bar assembly

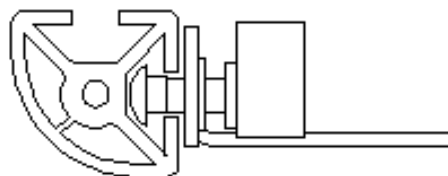
Step 1: Remove the take-up and idler rollers and support collars from the frame.



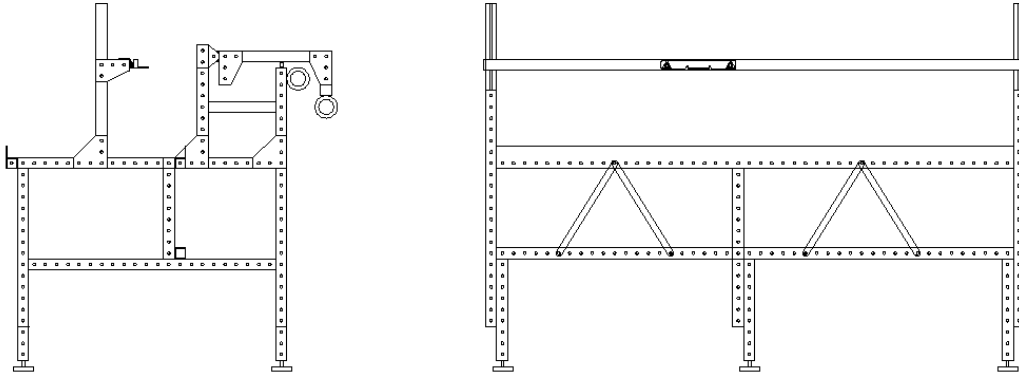
Step 2: Install the (2) ruler bar brackets on the slotted beams using (1) 5/16 x 3/4 Hex, (1) 5/16 lock washer and (1) 5/16 flat washer.



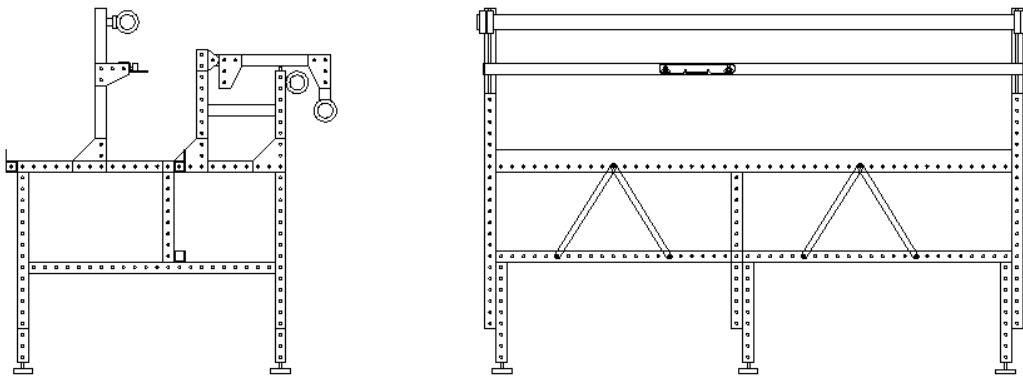
Step 3: Slide the ruler bracket onto the ruler bar as illustrated below.



Step 4: Install the ruler bar onto the ruler bar brackets using (1) 5/16 x 3/4 hex, (1) 5/16 lock washer and (1) 5/16 flat washer on each end.



Step 5: Re-install the take-up support collars and roller onto the machine.



Step 6: Adjust the ruler bar height for adequate clearance from the bed of the quilting machine.

Step 7: Check to make sure the take-up roller and ruler bar are parallel to each other and the frame.

3.0 Operation

The cross hatch ruler bar allows the user to slide the ruler left and right to any position along the length of the frame as well as set the angle of the ruler in 15° increments.

Installation of the cross hatch ruler:

1. Slide the cross hatch ruler underneath the cross hatch ruler bracket.
2. Install the (2) angle adjusting knobs through the bracket and into the ruler. **DO NOT OVERTIGHTEN.**
3. Removal is reverse.

Adjustment left to right:

1. Loosen the two locking knobs on the ruler bracket.
2. Slide the ruler to the desired position
3. Tighten the locking knobs

Adjustment of ruler angle:

1. Remove the front angle adjusting knob in the ruler.
2. Align hole in ruler with hole in ruler bracket at desired angle.
3. Re-install the angle adjusting knob. **DO NOT OVERTIGHTEN**

Removal of cross hatch ruler bracket:

1. Remove the two locking knobs and 5/16 flat washers.
2. Lift the cross hatch ruler bracket off of the studs.
3. Slide stud to either end of the bar.
4. Installation is reverse.

