

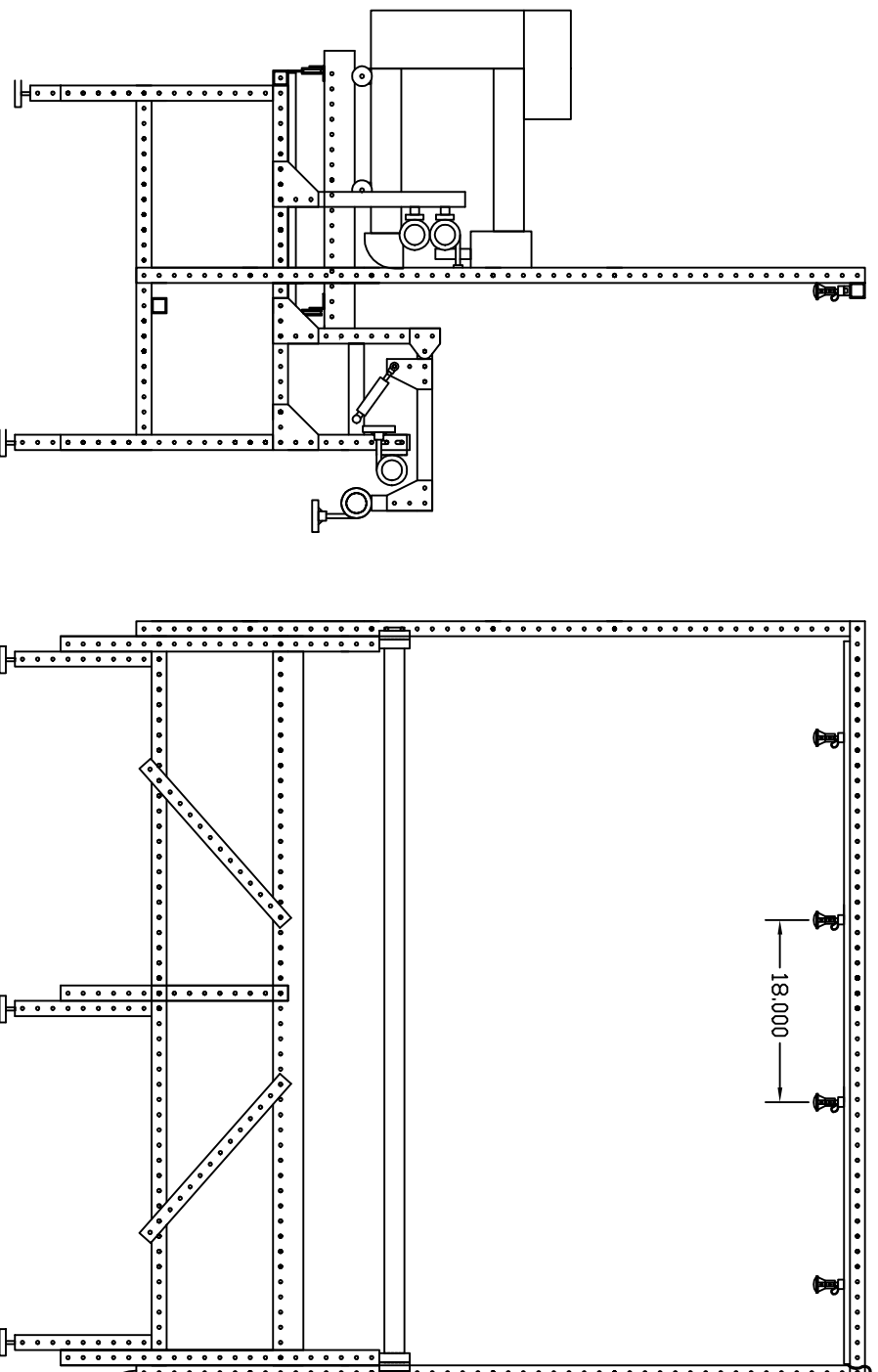
# LIGHT BAR ASSEMBLY:

## WARNING:

INSTALL NO MORE THAN 12 LIGHTS PER LIGHT BAR

ATTACH 72" VERTICAL TUBES TO FRAME USING (4) 5/16 X 3-1/2" HEX HEAD BOLTS, (8) FLAT WASHERS AND (4) NYLOCK NUTS

ATTACH LIGHT SUPPORT BAR TO THE TOP HOLE OF 72" VERTICAL TUBES USING (2) 5/16 X 3-1/2 HEX HEAD BOLTS, (4) FLAT WASHERS AND (2) NYLOCK NUTS.



NOTE: PASS WIRE THROUGH THE INSIDE OF 72" VERTICAL PERFORATED TUBE. ATTACH TRACK LIGHT SUPPORT RAIL TO ACHIEVE DESIRED PLUG EXIT LOCATION (LEFT OR RIGHT)