

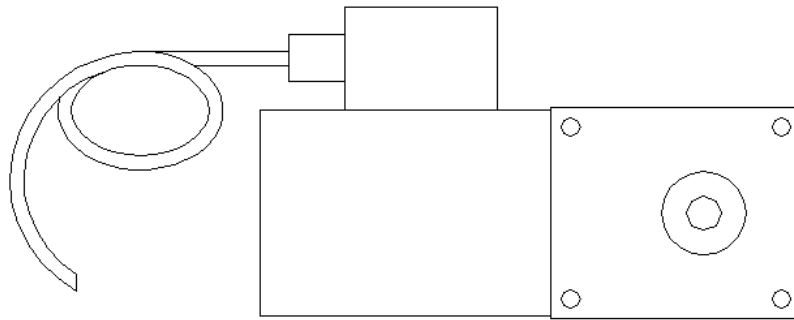
**ABM International, Inc.**

Innova Power Feed

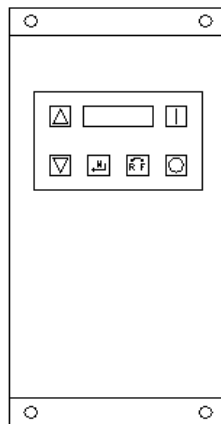
### 1.0: Parts List

#### Commercial Parts -

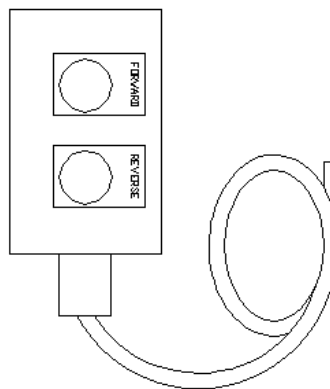
Feed motor (Qty. 1)



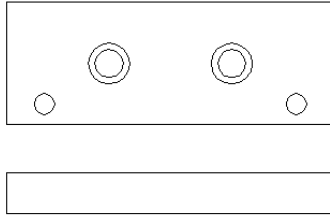
Feed motor controller (Qty. 1)



Hand terminal (Qty. 1)



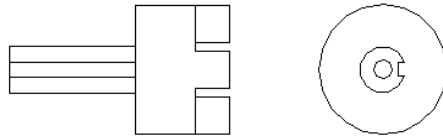
Feed motor mount (Qty.1)



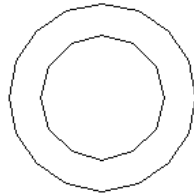
Controller mount (Qty. 2)



Feed roller adapter (Qty. 1)



Roller collar (Qty. 1)



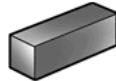
Steel spacer (1)



Plastic bushing (Qty. 1)



Machine key (Qty. 1)



5/16 T-nut (Qty. 4)



**Bolt kit –**

**Hex head cap screws:**



(Qty. 2) 5/16 x 3/4  
(Qty. 1) 5/16 x 2-3/4  
(Qty. 2) 5/16 x 4-1/2

**Socket head cap screws:**



(Qty. 4) #10 x 3/4"  
(Qty. 2) 5/16 x 1/2"

**Flat washers:**



(Qty. 8) #10  
(Qty. 5) 5/16  
(Qty. 1) 5/16 Small OD washer (<5/8" OD) – key retaining washer  
(Qty. 2) 5/16 Large OD Gold washer  
(Qty. 1) 5/16 Fender washer

**Lock washers:**



(Qty. 5) 5/16

**Nylon insert lock nuts:**

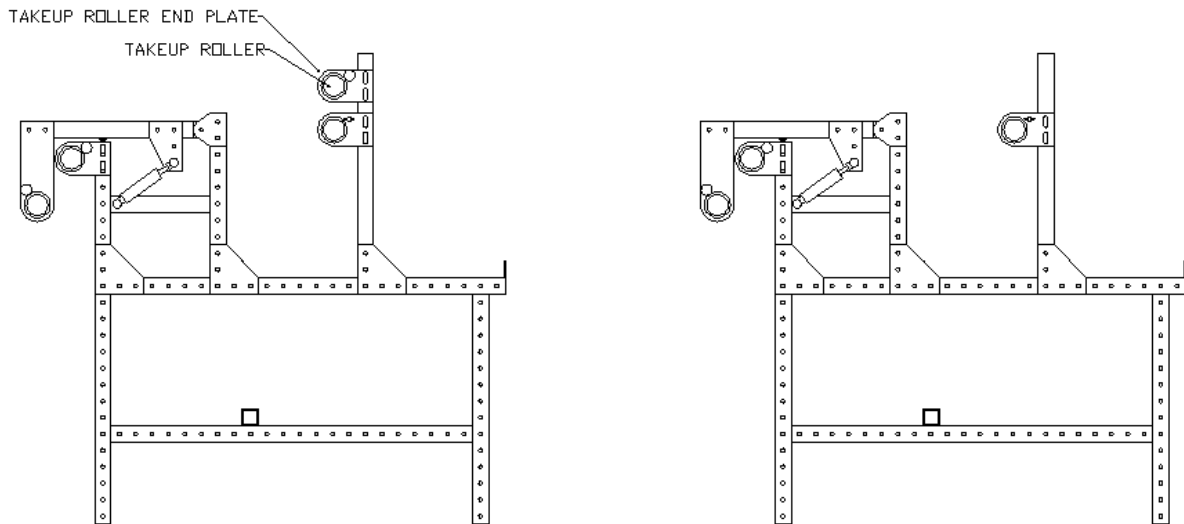


(Qty. 4) #10

## 2.0 Feed roller assembly

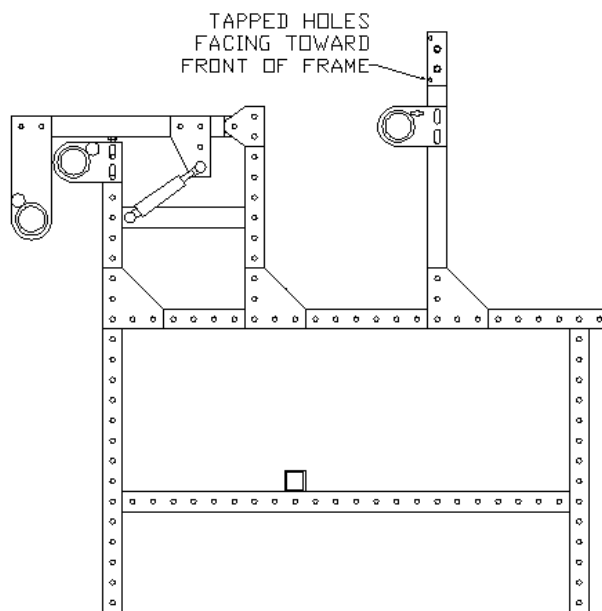
Step 1: Decide whether the feed motor will be mounted on the left or right side of the frame. Either side uses the identical installation. The right side is used for the assembly instructions.

Step 2: Remove the take-up roller from the machine.

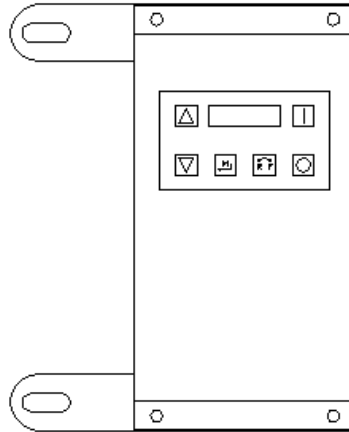


Step 3: Remove the take-up roller end plate from the machine on the side that the feed motor will be installed. If the end plate with gear assembly is on the machine, remove the gear from the roller – it is not needed and should not be installed on the machine with the power feed.

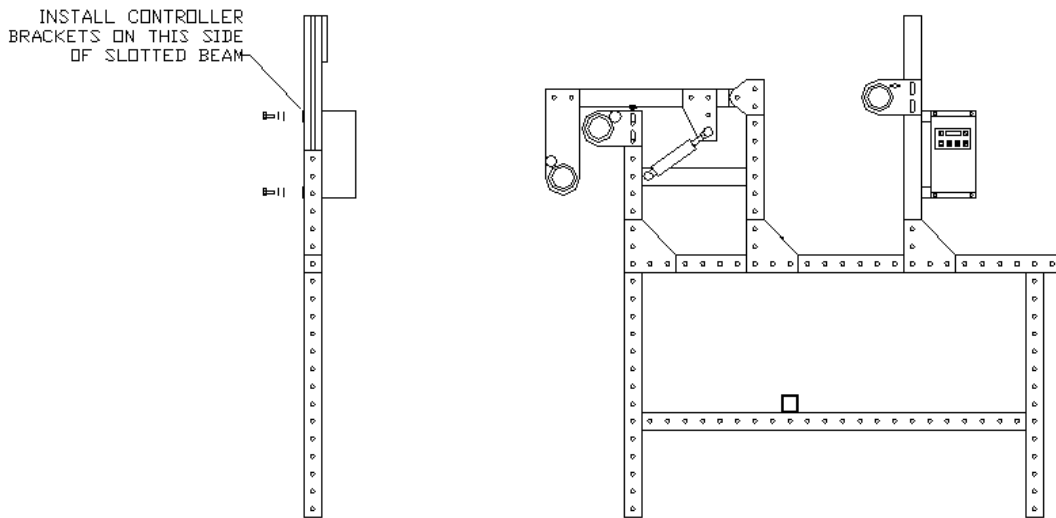
Step 4: Install the feed motor mount flush to the top edge of the 20.5" slotted beam using (2) 5/16 x 1/2" socket head bolts and (2) T-nuts. Make sure to install the motor mount with the tapped holes facing toward the front of the frame.



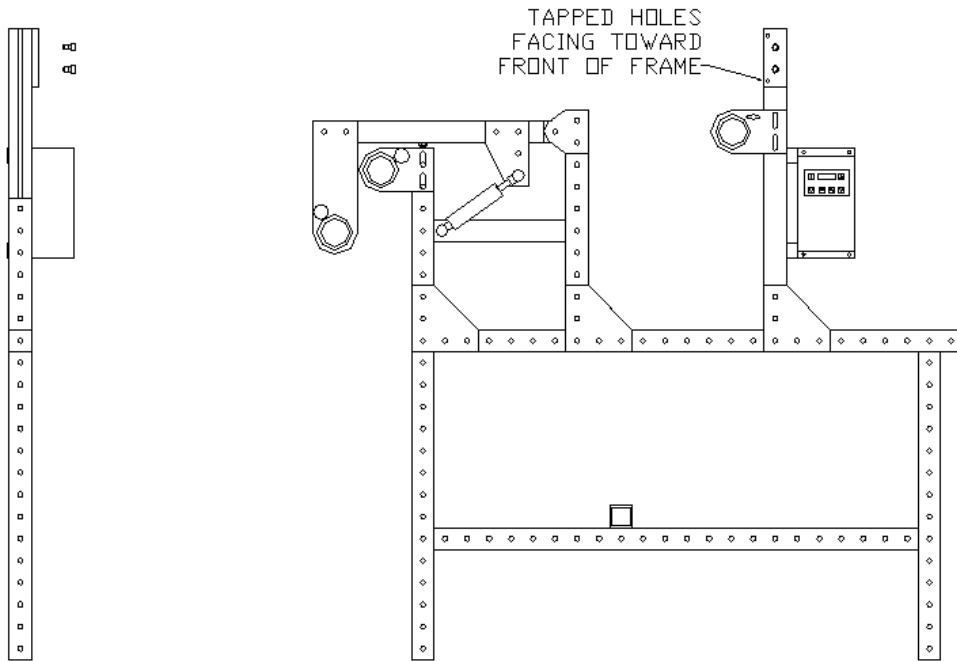
Step 5: Bolt the motor controller to the controller mounts using (4) #10 x 3/4 bolts, (8) #10 flat washers and (4) #10 nylon insert lock nuts.



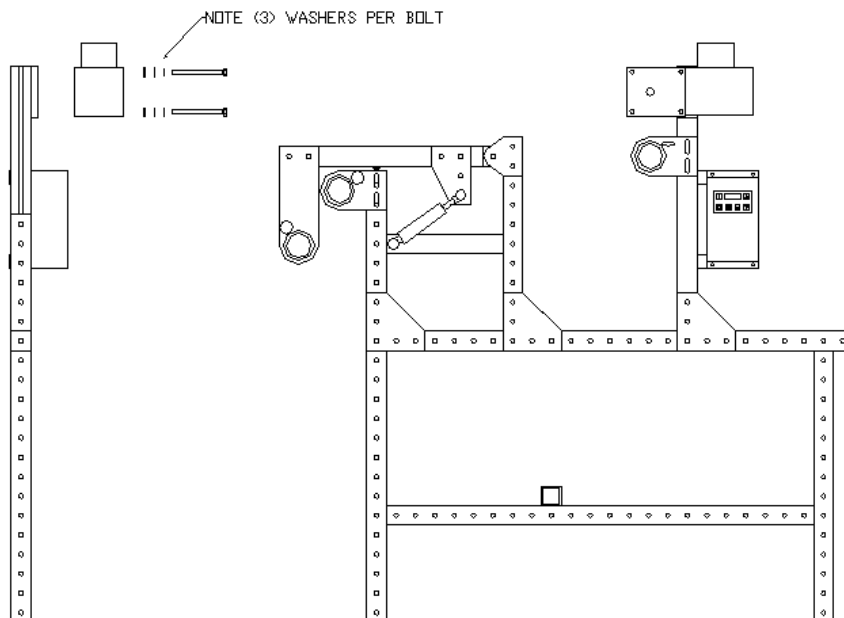
Step 6: Install the motor controller onto the back side of the slotted beam as pictured. Use (2) 5/16 x 3/4 hex head bolts, (2) 5/16 lock washers, (2) 5/16 flat washers and (2) T-nuts.



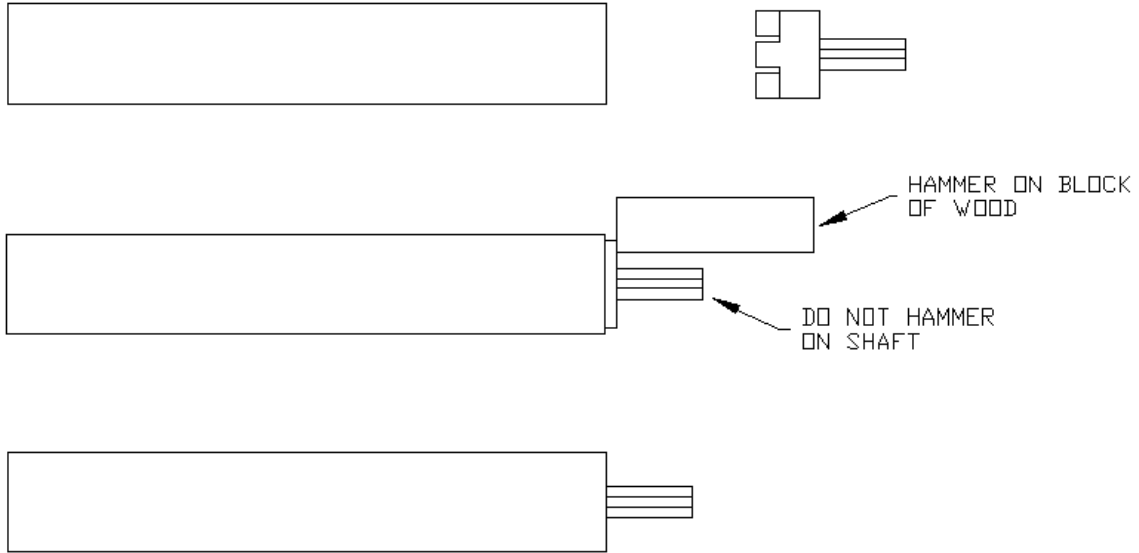
Step 7: Install the feed motor mount onto the slotted beam using (2) 5/16 x 1/2" socket head cap screws and (2) T-nuts.



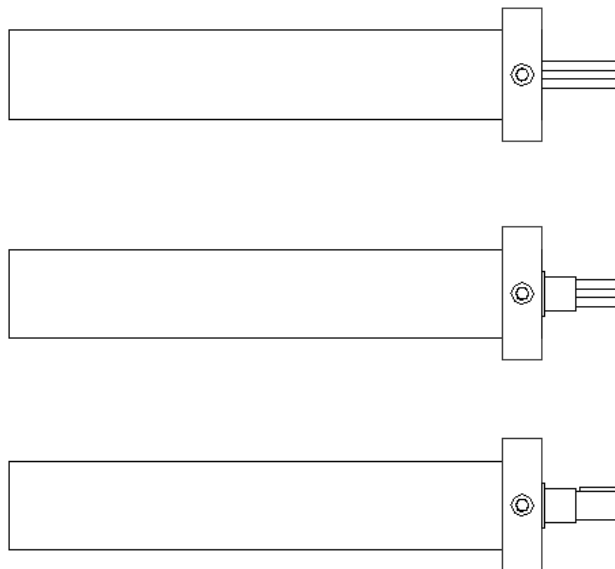
Step 8: Install the feed motor onto the motor mount using (2) 5/16 x 4-1/2" hex head bolts, (2) lock washers, (2) flat washers, and (2) large OD Gold washers.



Step 9: Install the feed roller adapter into either end of the roller that was removed from the frame in Step 2. It may be necessary to tap the adapter into the roller using a hammer. **CAUTION: Do not hit the shaft end of the adapter with a hammer. If necessary, use a block of wood to avoid marring the shaft end.**

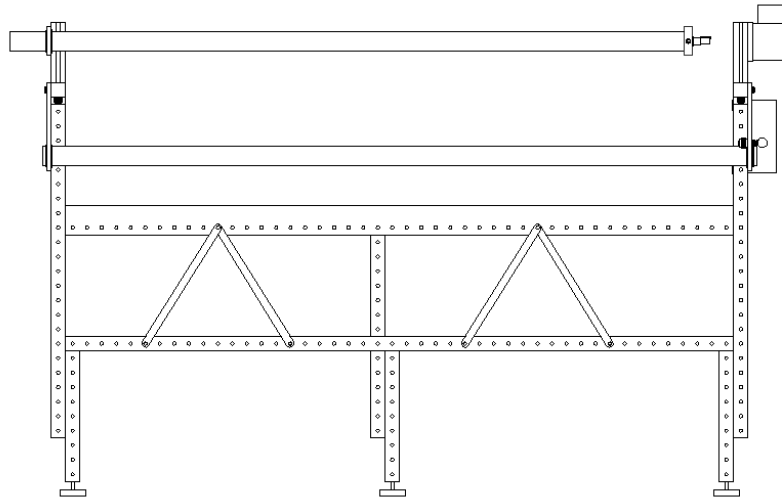


Step 10: Install the roller collar onto the roller end with the adapter installed. Firmly tighten the set screw. Install the plastic bushing and machine key onto to shaft of the adapter as shown.

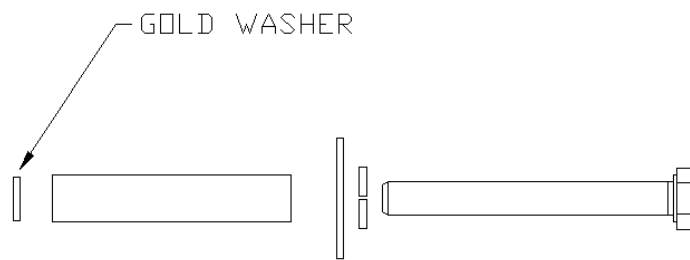




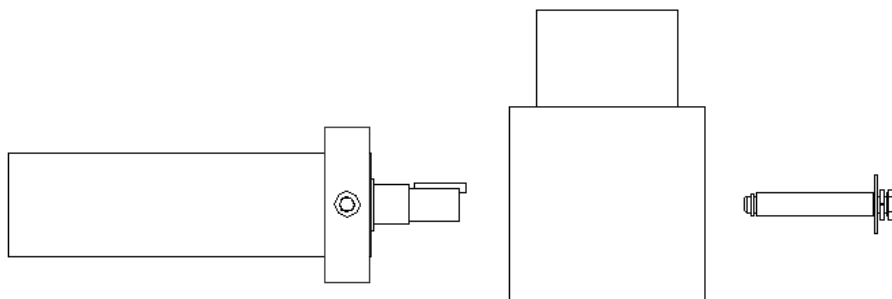
Step 11: Install the roller through the roller collar support located on the opposite end from the feed motor.



Step 12: Install the 5/16 lock washer, 5/16 fender washer, the steel spacer and the 5/16 key retaining washer onto the 5/16 x 2-3/4" hex head bolt in the order shown below.



Step 13: Align the key in the adapter shaft with the keyway in the hollow bore of the motor and push in the shaft until the plastic bushing contacts the feed motor. Install the 5/16 x 2-3/4 bolt assembly from step 12 (use a small amount of Loctite® thread locker #242 or similar if available into the opposite end of the motor hollow bore and tighten into the end of the adapter shaft.



Step 14: Install the plastic cover included with the motor over the bolt and fender washer. The cover will snap into place.

Step 15: If necessary, adjust the take-up roller vertical alignment.

### 3.0 Operation and Safety

**DANGER: THE MOTOR CONTROLLER RETAINS ITS CHARGE AFTER THE POWER IS REMOVED. DISCONNECT POWER AND WAIT AT LEAST 3 MINUTES BEFORE SERVICING ANY PART OF THE POWER FEED SYSTEM.**

The Innova power feed system consists of three main components, the hand terminal, the motor controller and the feed motor. The hand terminal allows the operator to operate the feed motor in either the forward or reverse directions. The motor will only operate when the pushbutton is depressed completely. Releasing the pushbutton will stop the motor and engage the brake.

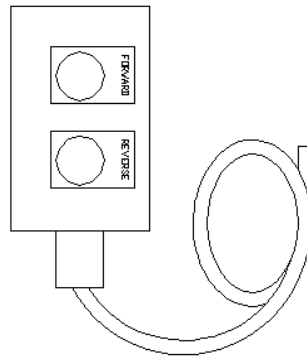


Figure 3.1: Hand Terminal

The motor controller provides the operator the ability to control how fast the roller turns. With the power cord plugged in, the user can adjust speed up or down by using the up and down arrow keys on the control panel. ABM has limited the settings to a range between 21 and 60. The speed setting can be changed while the motor is stopped or running.

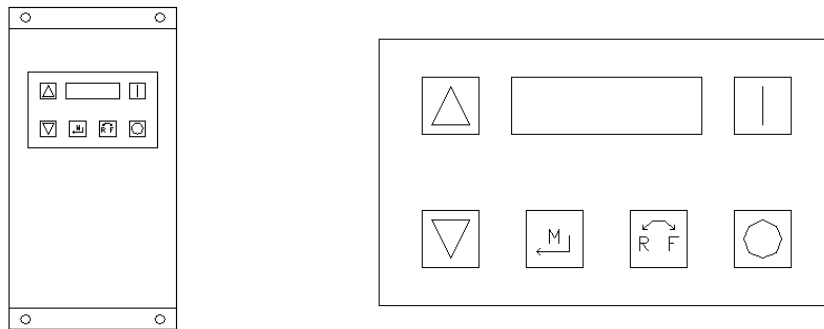


Figure 3.2: Motor Controller and Display

On power up, the motor controller will display the word “STOP”. When either of the pushbuttons is pressed the motor will display the number corresponding to the set speed (between 21 and 60). If a problem occurs, the controller will display an error code. If at anytime the controller displays an error code, contact ABM immediately. Do not attempt to repair or correct the problem without consulting ABM first.

The feed motor is a factory sealed unit. No attempt should be made to repair the unit without consulting ABM first. When a pushbutton is pressed or released, the motor brake will disengage or engage making a clicking sound, this is normal.