

ABM International, Inc.

Innova Presser Foot Installation
Open, Trapunto, Ruler and Standard

1.0: Parts List

Presser foot (Qty. 1)



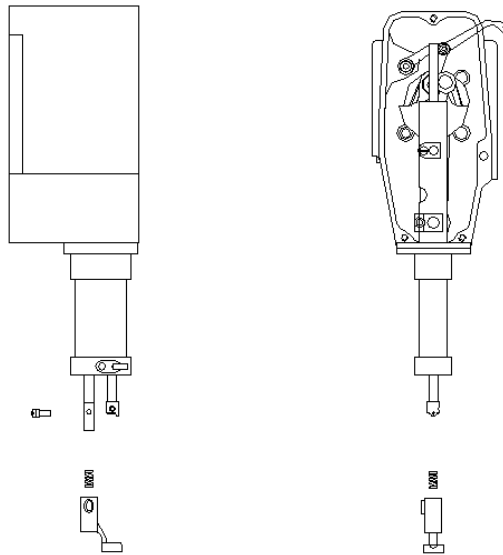
2.0: Presser foot installation

Step 1: Remove the needle from the machine

Step 2: Loosen, but do not remove the head pivot bolt. Release the pivot pin on the side of the head and pivot the head so that it is facing sideways.

Step 3: Remove the presser bar shoulder screw and the presser foot from the presser bar. **DO NOT LOSE THE SMALL SPRING IN THE END OF THE PRESSER BAR INSIDE THE FOOT.**

Step 4: Clean and lightly oil the shiny metallic end of the presser bar.



Step 5: Make sure the spring is installed in the hollow end of the presser bar. If the spring fell out of the bar and is inside the original foot, remove the spring from the foot and place it in the end of the presser bar.

Step 6: Clean and lightly oil the shiny end of the presser bar where the foot mounts.

Step 7: Install the new presser foot onto the presser bar with the spring installed in the end and carefully re-install the shoulder screw. Lightly oil the area where the shoulder screw comes in contact with the presser foot.

Step 8: Check to ensure the foot compresses and extends freely. **NOTE: IT WILL TAKE SOME EFFORT TO COMPRESS THE SPRING BUT THE FOOT SHOULD NOT BIND OR STICK. IF IT STICKS, REMOVE THE FOOT AND CHECK FOR DIRT OR DEBRIS THAT MAY CREATE A BIND. CLEAN, LIGHTLY OIL AND RE-INSTALL THE FOOT.**

Step 9: Clean any excess oil off of the foot and the machine.

Step 10: Release the pivot pin on the side of the head and rotate the head back to the correct sewing position.

Step 11: Re-install the needle in the needle bar. Center the needle in the hole of the needle plate and firmly tighten the head pivot bolt on top of the machine.