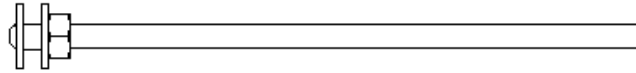


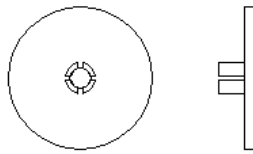
ABM International, Inc.
Horizontal Side Spool Holder

1.0: Parts List

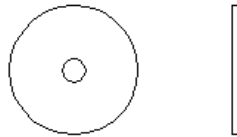
Spool post with hex nut, washer and square nut (Qty. 1)



Spool holder plate (Qty. 2)

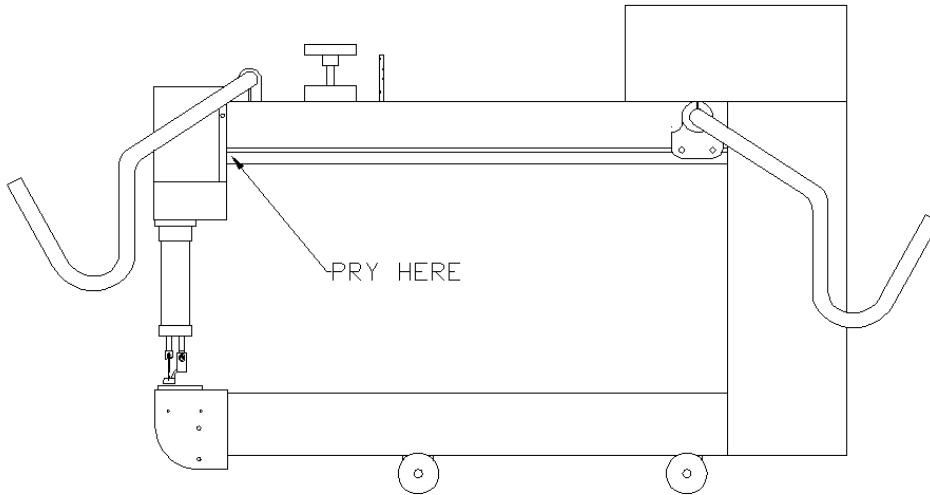


Felt washer (Qty. 2)

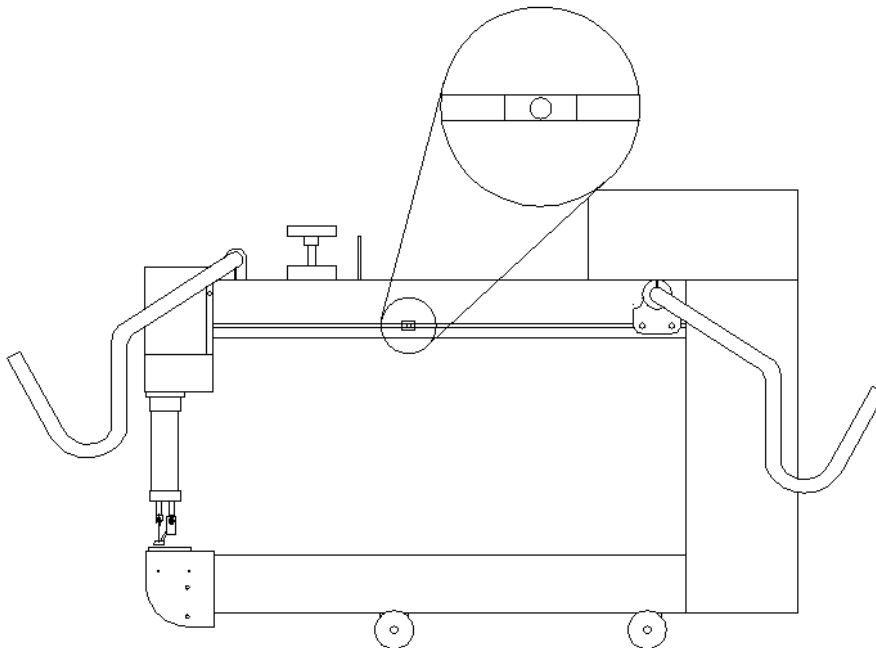


2.0 Side spool holder assembly

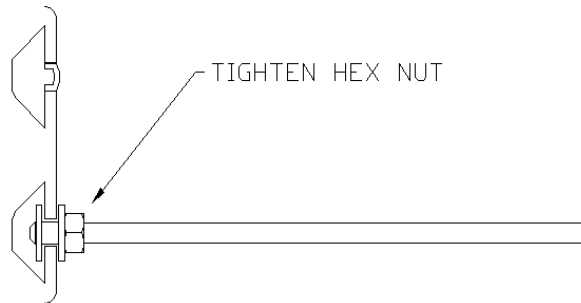
Step 1: Remove the plastic slot cover from the lower right slot of the top beam. To help remove the strip without damage, it is recommended to pry at the front end of the slot cover with a small flat blade screwdriver.



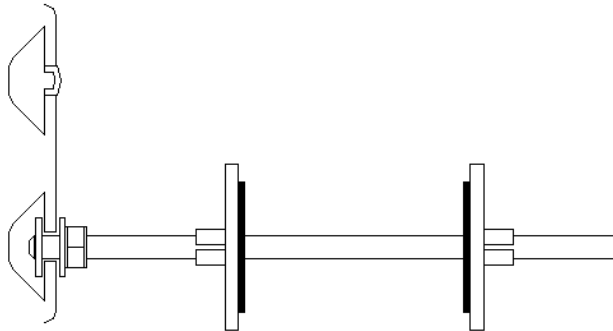
Step 2: Remove the square nut from the spool post and drop it into the exposed slot.



Step 3: Thread the spool post into the square nut inside the slot and tighten the hex nut to secure the post to the side of the quilting machine. **NOTE:** Make sure to position the horizontal spool holder toward the back end of the machine past the vertical thread post on the top of the machine.



Step 4: Install the spool holder plates and felt washers.



3.0 Threading the machine

The horizontal spool holder allows the operator to use standard spools of thread. The spool holder must be positioned to the rear of the machine behind the vertical thread post located on the top beam. When the machine is threaded, the thread must run from the horizontal spool holder to the top hole in the vertical thread post. The remaining threading is identical to the standard procedure.

