

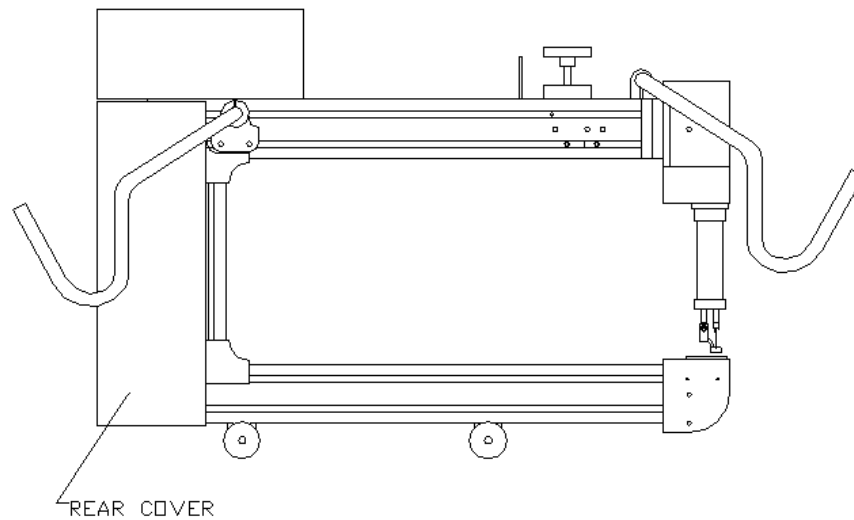
## **PANTOVISION Installation**

ABM International, Inc.

### **Wiring the PantoVision blue box to the Innova:**

Step 1: Turn OFF the machine and unplug it from the power outlet.

Step 2: Remove the rear cover of the Innova.



Step 3: Use one of the following illustrations to wire the PantoVision blue box to the Innova.

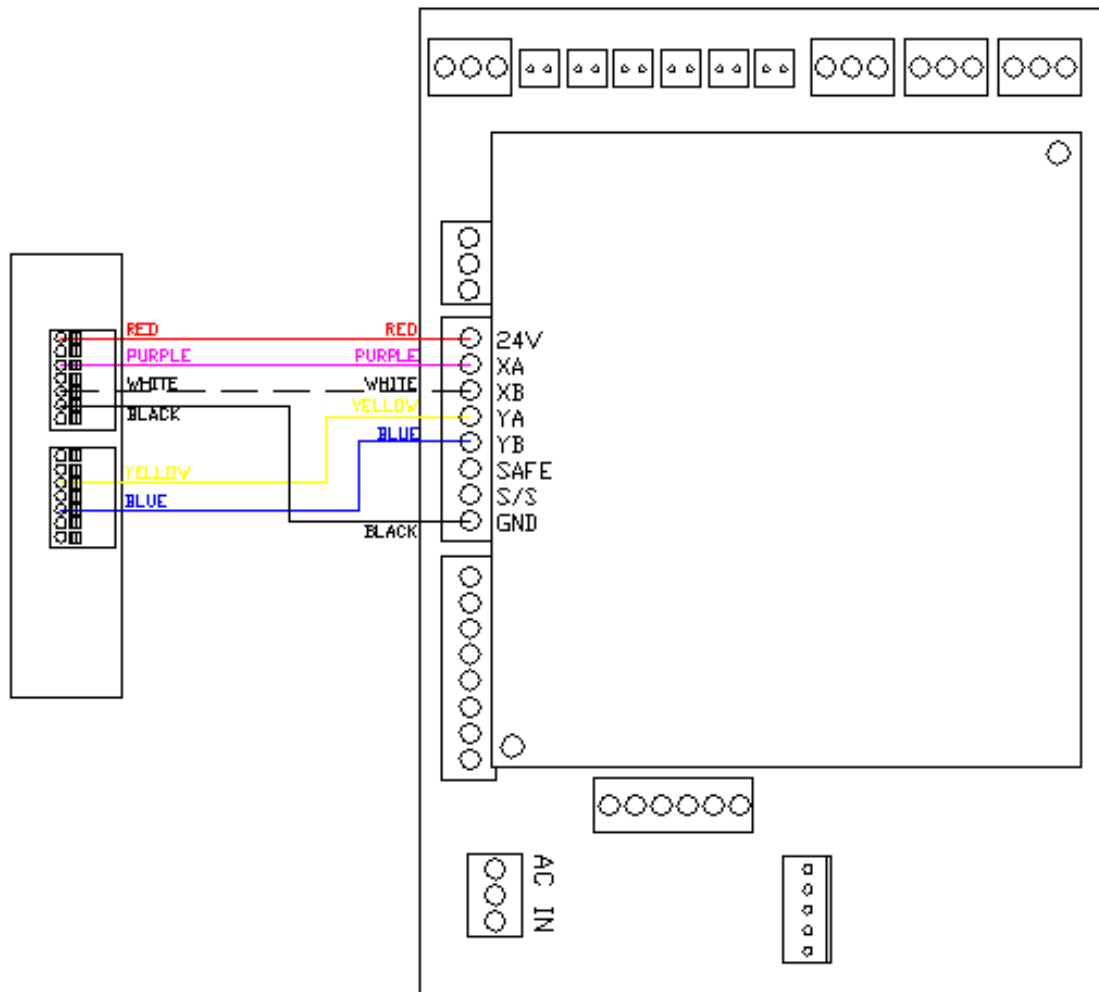
Proprietary information of ABM INTERNATIONAL, Inc. furnished for customer use only.

No other uses are authorized without the prior written permission of

**ABM INTERNATIONAL, INC.**

**For Innovas equipped with Lightning Stitch:**

Connect the color coded and labeled wires to the corresponding green screw terminal on the Lightning Stitch Board. **CAUTION: MAKE SURE THE RED WIRE AND ONLY THE RED WIRE IS CONNECTED TO 24V OR SERIOUS DAMAGE TO THE BLUE PANTO BOX, THE ENCODERS OR THE LIGHTNING STITCH CONTROLLER MAY OCCUR. DAMAGE CAUSED BY MISWIRING THE PANTO IS NOT COVERED UNDER WARRANTY.**



Proprietary information of ABM INTERNATIONAL, Inc. furnished for customer use only.

No other uses are authorized without the prior written permission of

**ABM INTERNATIONAL, INC.**

**For Innovas equipped with Standard or Pro Stitch Regulation:**

**SEE DIAGRAM ON FOLLOWING PAGE**

- 1) Completely unwire the X and Y encoder wires (black, blue and brown) from the green screw terminal blocks on the back of the PLC. **CAUTION, DO NOT REMOVE ANY OTHER WIRES FROM THE PLC.**
- 2) Remove the electrical tape on the encoder cables and free the tied back white wire from the end of the encoder cable. Tie back the orange and heavy black wire with electrical tape.
- 3) Connect the X and Y axis encoders to the new green terminal block supplied with the PantoVision. Follow the illustration for proper wire locations. **NOTE:** The X-axis is the encoder that rolls LEFT and RIGHT on the lower carriage of the machine and the Y-axis is the encoder that rolls IN and OUT on the left side of the sewhead.
- 4) Connect the loose RED, BLACK, YELLOW and PURPLE wires to the green screw terminal blocks on the back of the Innova PLC. Make sure that all other wires that are in the terminals do not fall out. **CAUTION: MAKE SURE THE RED WIRE IS CONNECTED TO THE + TERMINAL ON THE PLC AND THE BLACK WIRE IS CONNECTED TO THE – TERMINAL ON THE PLC OR SERIOUS DAMAGE CAN OCCUR TO THE BLUE PANTO BOX, THE ENCODERS OR THE PLC. DAMAGE CAUSED BY MISWIRING THE PANTO IS NOT COVERED UNDER WARRANTY.**

Proprietary information of ABM INTERNATIONAL, Inc. furnished for customer use only.

No other uses are authorized without the prior written permission of

**ABM INTERNATIONAL, INC.**

**ABM International, Inc.**  
Model: Innova Longarm Quilting Machine

Series: All Innovas  
PantoVision Installation Ver. 2.0

**THIS PAGE IS INTENTIONALLY LEFT BLANK**

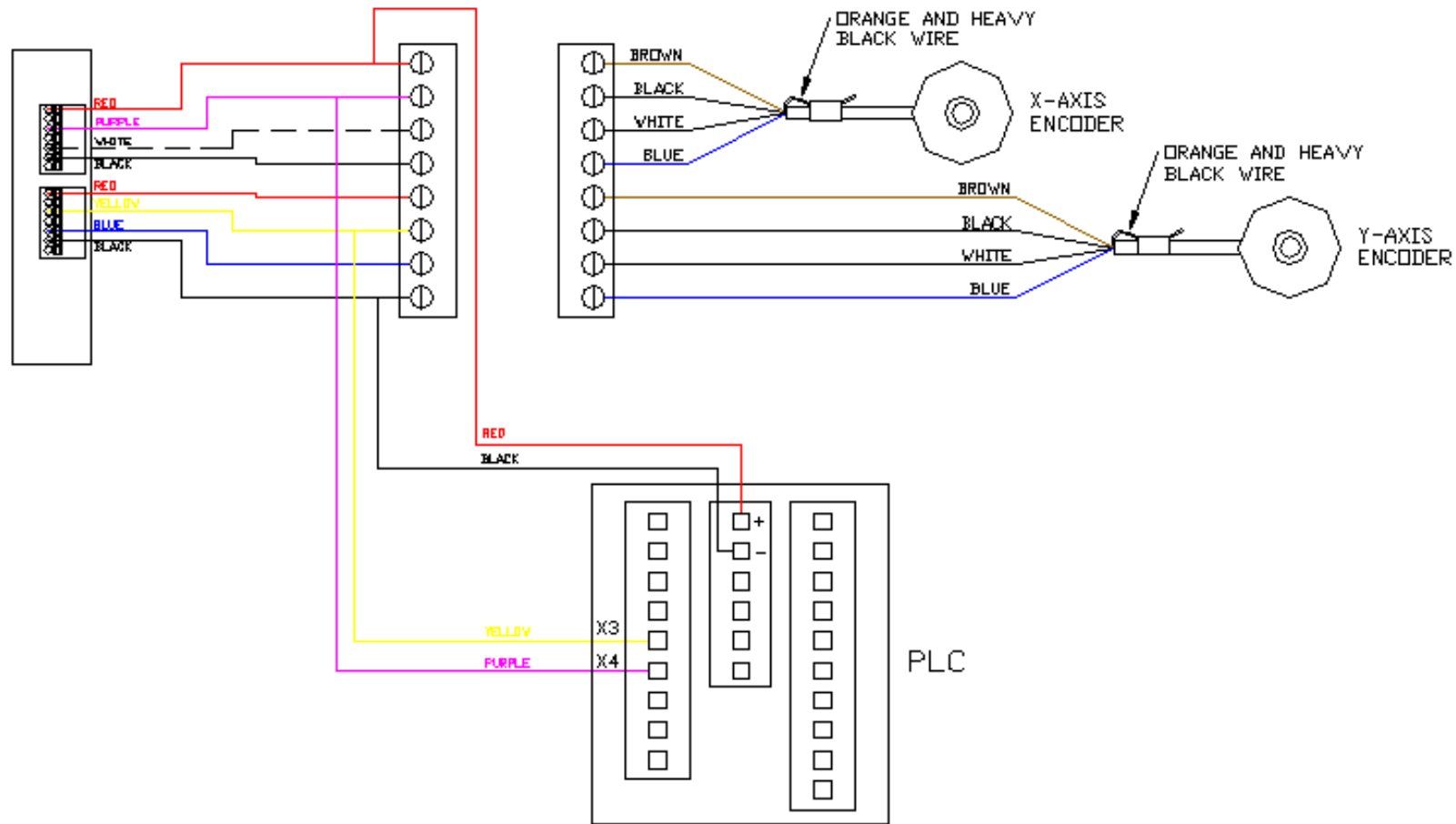
Proprietary information of ABM INTERNATIONAL, Inc. furnished for customer use only.

No other uses are authorized without the prior written permission of

**ABM INTERNATIONAL, INC.**

**ABM International, Inc.**  
Model: Innova Longarm Quilting Machine

Series: All Innovas  
PantoVision Installation Ver. 2.0



Proprietary information of ABM INTERNATIONAL, Inc. furnished for customer use only.

No other uses are authorized without the prior written permission of

**ABM INTERNATIONAL, INC.**

**ABM International, Inc.**  
Model: Innova Longarm Quilting Machine

Series: All Innovas  
PantoVision Installation Ver. 2.0

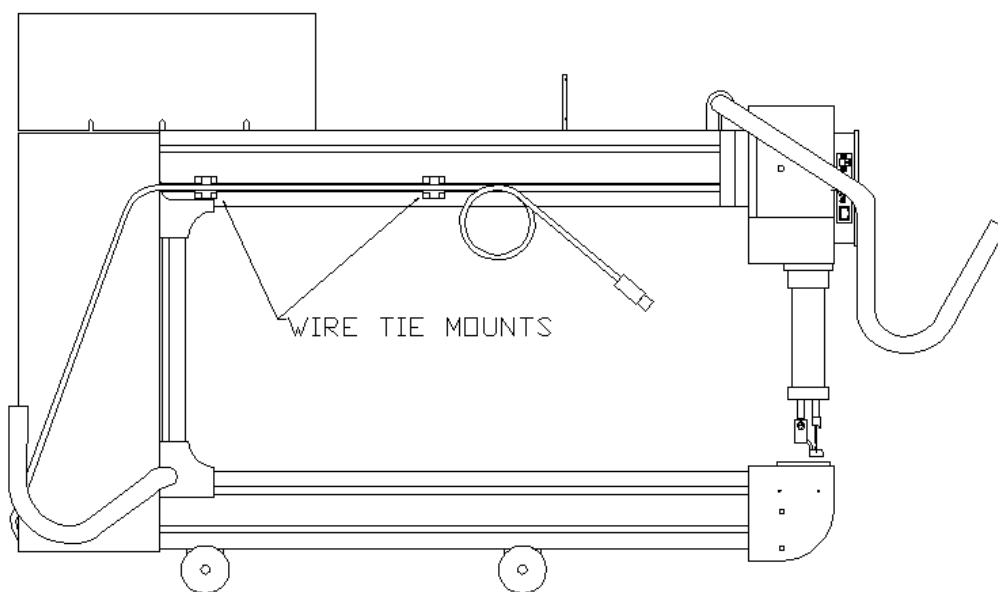
Step 4: Connect the supplied USB cable to the side of the PantoVision blue box.

Step 5: Tuck the blue box into the rear compartment of the Innova and wire tie it in place.

Step 6: Route the USB cable out the bottom of the Innova with the power and encoder cables.

Step 7: Re-install the rear cover.

Step 8: Use the included wire tie mounts to hold the USB cable in the desired location on the side of the Innova.



Step 9: Refer to the Software Installation Guide Leaflet provided in the package for software installation.

Proprietary information of ABM INTERNATIONAL, Inc. furnished for customer use only.

No other uses are authorized without the prior written permission of

**ABM INTERNATIONAL, INC.**