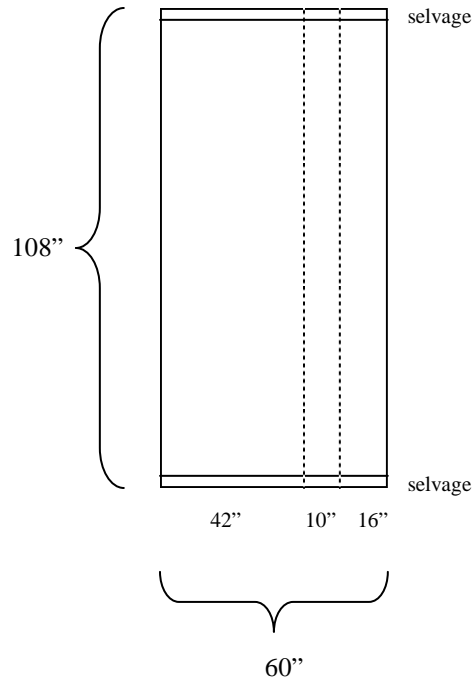


Innova Leader Application

Fabric requirements for basic leaders:
 108" x 42" for take up leader
 108" x 10" for bottom leader
 108" x 16" for top leader

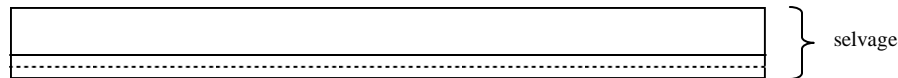
These measurements can be achieved with a 2 yd piece of extra wide backing, cut as shown.

(note: extra wide backing may be as wide as 116", if it fits on your frame, don't cut it)

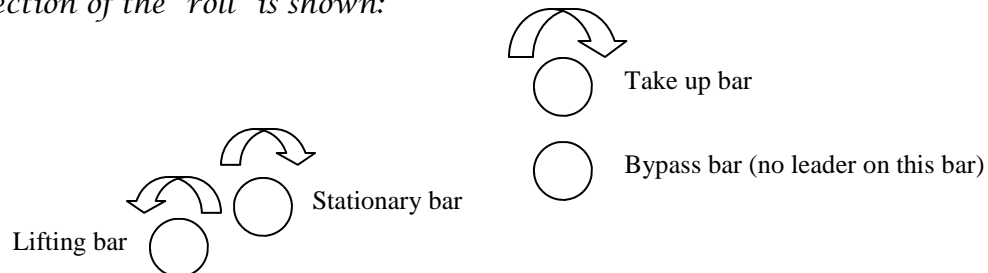


To prepare leaders:

1. *Cut as shown above.*
2. *Using a double fold edge (fold, then fold again), press and stitch a double fold edge approximately 1/2" on one long edge of each piece.*



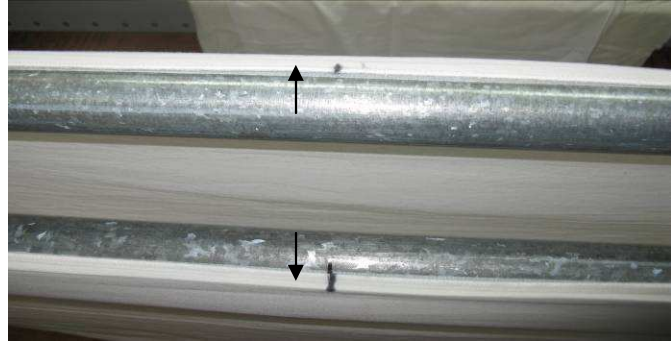
3. *Find the center of the stationary bar using your long tape measure. Mark with a sharpie.*
4. *Using a t-square, mark the centers of the other two bars (take-up and lifting) using the stationary bar mark as your guide. The black bypass bar does not have to be marked.*
5. *Find the centers of your leaders, mark. Matching the center lines, hold the unfinished edge on the bar, and duck tape in place (you may need an extra pair of hands).*
6. *The direction of the "roll" is shown:*



To load a quilt:



1. Sandwich the back, batting and top together, find the center and pin to the take up bar. Make sure you will go around the bypass bar.



2. This is the appropriate direction of the two bottom leaders. You will roll in the opposite direction so the fabric will always flow in this direction.



3. Side view of the two bottom leaders (the bar on the top is the stationary bar, meant for the quilt back. The bar on the bottom is the "lifting" bar meant for the quilt top).



4. Find the center of the bottom of the quilt back and pin onto the leader (the batting and quilt top are lifted out of the way). Roll up as shown.



5. Smooth out the batting, drop into the space between the two bars.



6. Find the center of the bottom of the quilt top, pin onto the leader as shown. Roll up.



This is the appropriate load and roll for a quilt. You can modify this basic technique to fit your needs if you prefer to wrap the binding, spray baste, etc.